

THE RANGE RETIREMENT VILLAGE

The Gippslander

The Gippslander is a luxurious two- bedroom villa featuring an open plan living area, well-appointed kitchen, built-in robes and en suite access to both bedrooms. It also features a rear outdoor private courtyard garden.

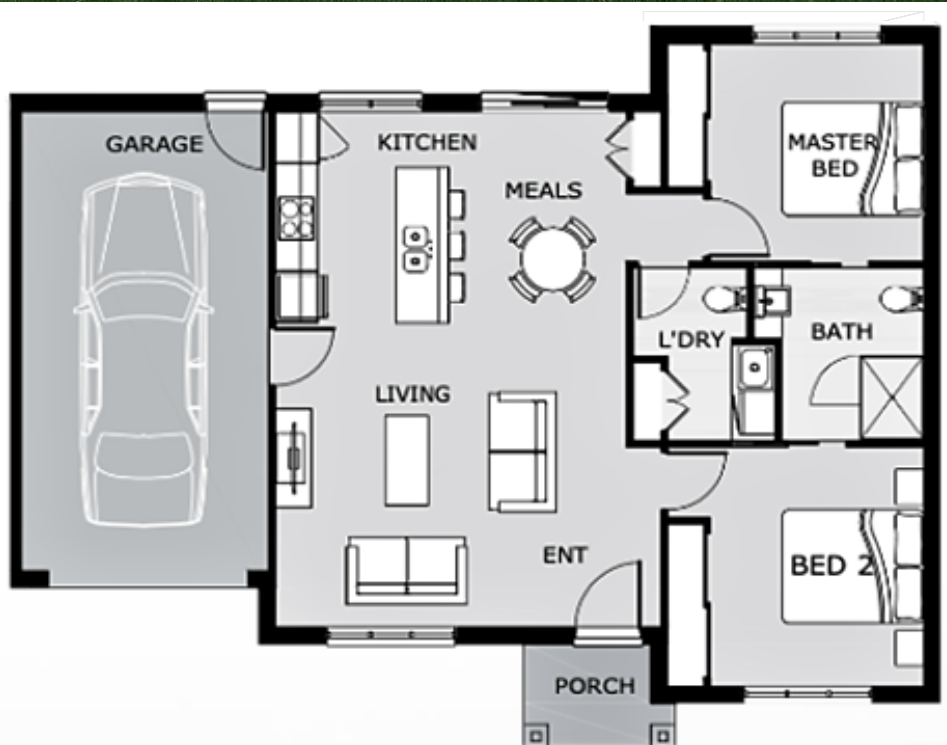


FEATURES

- 6-star rating
- Double-glazed windows to bedrooms and living
- Brick/ render combination
- Concrete roof tiles
- Air-conditioning unit
- 2.7m ceiling height
- Attached garage with internal access
- Wall-mounted oven with microwave space & dishwasher
- Ensuite access
- Outdoor living

BENEFITS

- Gated community
- No stamp duty or GST payments
- Beautifully appointed Clubhouse
- Pedestrian-friendly village
- Stunning landscaped gardens
- Pet-friendly environment



* All information in this pamphlet is indicative only

Range Way, Moe

1800 531 956

www.therangeretirementvillage.com.au

Embrace life in retirement